

PCA with BCP (Bromocresol Purple)



Medium used for the enumeration of *Lactobacilli* in milk and dairy products.

* Equally use with MFDS (MB-P1601K) and QIA (MB-P1601Q).

• CONTENTS (Liter)

Peptone	5.0 g
Yeast Extract	2.5 g
Dextrose	1.0 g
Tween 80	1.0 g
L-Cysteine	0.1 g
Bromocresol Purple	0.05 g
Agar	15.0 g
Final pH = 6.8 ± 0.2 at 25°C.	

• PROCEDURE

Suspend 24.65 G of powder to 1 L of distilled or deionized water. Heat to boiling until completely dissolved. Sterilize by autoclave at 121°C for 15 minutes. Cool to 45-50°C in water bath. Mix well. Dispense in petri dishes.

• INTERPRETATION

PCA with BCP (Bromocresol Purple) is medium for the enumeration of *Lactobacilli*. The medium is used for quality control in the manufacture of dairy products. *Lactobacilli* make yellow-colored colonies in deep or surface of medium, so can easily differentiation. Peptone and yeast extract provide nitrogen, carbon, vitamins and minerals. Dextrose and L-Cysteine provide the energy source. Tween 80 provides growth factors for growth of *Lactobacilli*. Bromocresol purple is the pH indicator.

• TECHNIC

Inoculate the plates with spreading the specimen on surface of the medium using a sterile loop. Incubate at 35 - 37°C for 18 - 48 hours (MFDS and QIA at 35 – 37 °C for 72 ± 3 hours). Refer appropriate references for recommended test procedure.

• QUALITY CONTROL FOR USE

Dehydrated medium

Appearance: free-flowing, homogeneous.

Color: light green.

Prepared medium

Appearance: slightly opalescent.

Color: purple.

Incubation conditions: 35 - 37 °C / 18 - 48 hours

(MFDS and QIA at 35 – 37 °C for 72 ± 3 hours)

Microorganism	ATCC	Inoculum CFU	Growth
<i>Lactobacillus bulgaricus</i>	11842	50-100	good
<i>Lactobacillus acidophilus</i>	4356	50-100	good

• STORE

The powder is very hygroscopic. Store the powder at room temperature, in a dry environment, in its original container tightly closed and use it before the expiry date on the label or until signs of deterioration or contamination are evident. Store prepared medium at 2-8°C.

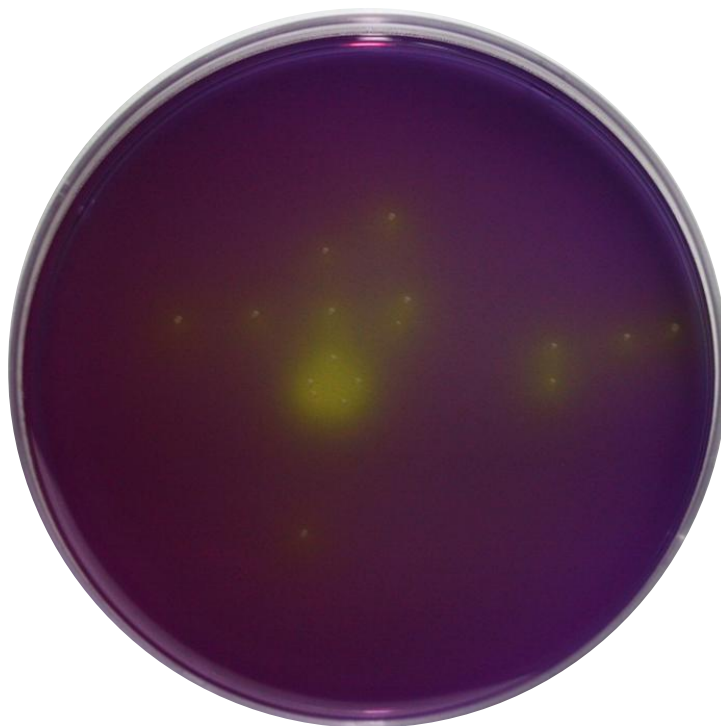
• REFERENCES

1. Downes F. P. and Ito K., (Eds.), 2001, Compendium of Methods for the Microbiological Examination of Foods, 4th Ed., APHA, Washington, D.C.
2. Refer to the MFDS and the QIA.

• PACKAGE

Cat. No : MB-P1601 PCA with BCP (Bromocresol Purple)	500 G
---	-------

• MICROBIAL CULTURE IMAGES



Lactobacillus delbruekii ATCC 11842 (100CFU)

Incubation conditions : 35±2°C 24h