

BG Sulfa Agar

Medium used for the isolation and cultivation of *Salmonella* spp. from clinical samples and foodstuffs.

*Equally use with MFDS (MB-B0863K).

• CONTENTS (Liter)

Yeast Extract	3.0 g
Proteose Peptone No.3	10.0 g
Lactose	10.0 g
Saccharose	10.0 g
Sodium Sulfapyridine	1.0 g
Sodium Chloride	5.0 g
Agar	20.0 g
Brilliant Green	0.0125 g
Phenol Red	0.08 g
Final pH = 6.9 ± 0.2 at 25°C	

• PROCEDURE

Suspend 59.09 G of powder in 1 L of distilled or deionized water. Heat to boiling until completely dissolved. Sterilize by autoclave at 121°C for 15 minutes. DO NOT OVERHEAT. Cool to 45-50°C in water bath. Mix well. Pour into petri dishes.

• INTERPRETATION

BG Sulfa Agar is a medium used for the isolation and cultivation of *Salmonella* spp. from clinical samples and foodstuffs. Yeast extract and proteose peptone No.3 provide nitrogen, vitamins and minerals. Lactose and saccharose are the sources of carbohydrates. Sodium sulfapyridine and brilliant green increases selectivity. Sodium chloride maintains the osmotic balance. Phenol red is the pH indicator. Agar is the solidifying agent.

• TECHNIC

Inoculate the specimen using a sterile loop to the medium. Incubate plates at 36 ± 1°C for 20 - 24 hours. Refer the appropriated reference for recommended test procedure.

• QUALITY CONTROL FOR USE

Dehydrated medium

Appearance: free-flowing, homogeneous

Color: pink

Prepared medium

Appearance: slightly opalescent

Color: orange-brown

Incubation conditions: 36 ± 1°C / 20 - 24 hours

Microorganism	ATCC	Inoculum CFU	Growth	Characteristics
<i>Salmonella enteritidis</i>	NCCP 12236	100-300	good	pink-white colonies
<i>Salmonella typhimurium</i>	14028	100-300	good	pink-white colonies
<i>Escherichia coli</i>	25922	≥10 ³	partially inhibited	yellow-green colonies
<i>Proteus vulgaris</i>	13315	≥10 ³	partially inhibited	-

• STORE

The powder is very hygroscopic. Store the powder at room temperature, in a dry environment, in its original container tightly closed and use it before the expiry date on the label. Store prepared medium at 2-8°C.

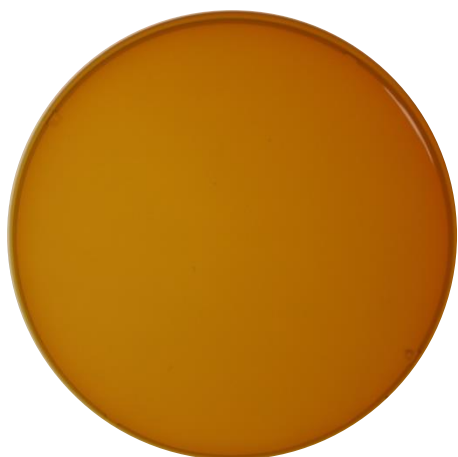
• REFERENCES

1. Osborne and Stokes, Appl. Microbiol., v. 3, 295 (1955).
2. D'Aoust. 1984. J.food Prot.
3. Gray, (1995). Manual of Clinical microbiology, 6th ed. American Society for microbiology, p.450-456.
4. United States Pharmacopeia Convention. 1995. The United States Pharmacopeia, 23rd ed.
5. Refer to the MFDS.

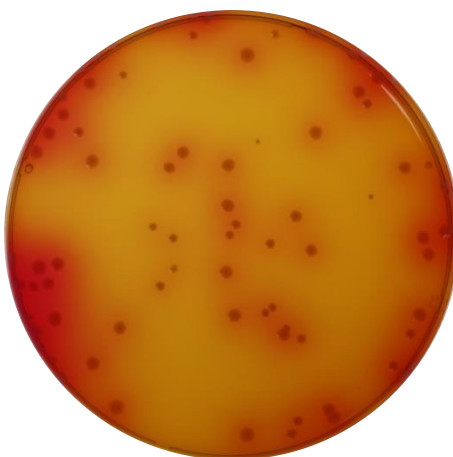
• PACKAGE

Cat. No : MB-B0863 BG Sulfa Agar	500 G
-------------------------------------	-------

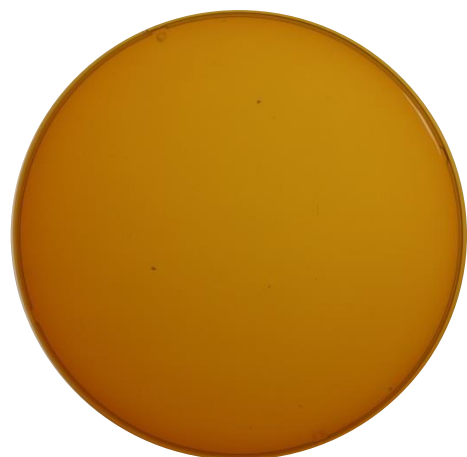
• MICROBIAL CULTURE IMAGES



None



Salmonella enteritidis NCCP 12236



Escherichia coli ATCC 25922

Incubation conditions : $36 \pm 1^{\circ}\text{C}$ 20 - 24h