

BS (Bifidobacterium Selective) Agar



Selective medium used for the isolation of *Bifidobacteria*.

*Equally use with MFDS (MB-B1381K) and QIA (MB-B1381Q).

• CONTENTS (Liter)

BL Agar without Tween 80	59.22 g
Sodium Propionate	15.0 g
Paromomycin Sulfate	0.05 g
Neomycin	0.1 g
Lithium Chloride	3.0 g
Tween 80	1.0 g
Final pH = 7.2 ± 0.2 at 25°C	

• PROCEDURE

Suspend 78.37 G of powder in 1 L of distilled or deionized water. Heat to boiling until completely dissolved. Sterilize by autoclave at 121°C for 15 minutes. Cool to 45-50°C in water bath. If necessary aseptically add 5% of Horse Blood Defibrinated (MB-H1883) or Sheep Blood Defibrinated (MB-S1876). Dispense in petri dishes.

• INTERPRETATION

BS (Bifidobacterium Selective) Agar is the medium used for the isolation of *Bifidobacteria*. The medium is used for quality control in the manufacture of dairy products. At the industrial level this medium allows an easy and fast quality control of yogurt made with Bifidus and can be used to control the count of Bifidus bacteria. Bifidobacterium grow very well on it while *Lactobacillus* and *Streptococcus* strains are inhibited. BL Agar (MB-B1380) is a selective medium for the cultivation and maintenance of *Bifidobacterium* species, numerous Lactobacillus species. Sodium propionate is a topical antifungal agent. Paromomycin sulfate and neomycin are antibacterial agents. Lithium chloride is used as organic synthesis.

• TECHNIC

Inoculate the plates with spreading the specimen on surface of the medium using a sterile loop. Incubate at 36 ± 1°C for 48 - 72 ± 3 hours under anaerobic condition. Refer appropriate references for recommended test procedure.

• QUALITY CONTROL FOR USE

Dehydrated medium

Appearance: free-flowing, homogeneous.

Color: beige.

Prepared medium

Appearance : slightly opalescent.

Color: amber (if add blood, cherry red.)

Incubation conditions: 36 ± 1°C / 48 - 72 ± 3 hours / anaerobic condition

Microorganism	ATCC	Inoculum CFU	Growth
<i>Bifidobacterium longum</i>	15707	10 ² -10 ³	Good

• STORE

The powder is very hygroscopic. Store the powder at room temperature, in a dry environment, in its original container tightly closed and use it before the expiry date on the label or until signs of deterioration are evident. Store prepared medium at 2-8°C.

• REFERENCES

1. Dowell, V. R., Jr. and T. M. Hawkins. 1974. Laboratory Methods in Anaerobic Bacteriology. CDC Laboratory Manual. USDHEW C. D. C. Atlanta, GA 30333.
2. Refer to the MFDS and the QIA.

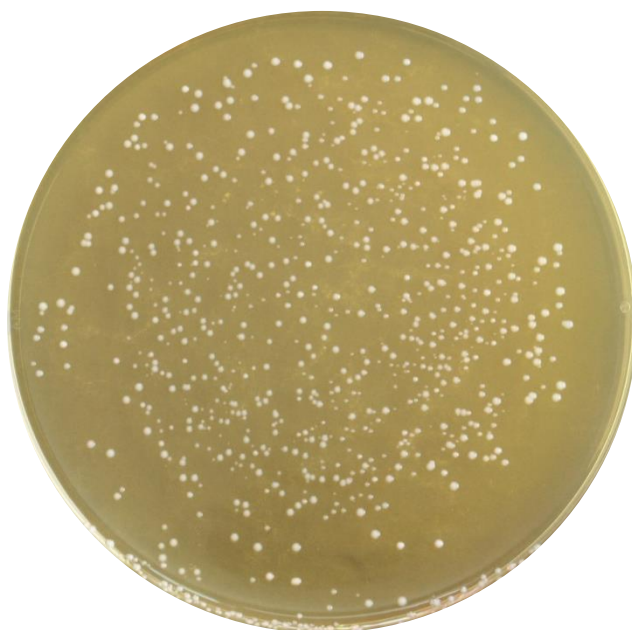
• PACKAGE

Cat. No : MB-B1381 BS (Bifidobacterium Selective) Agar	500 G
---	-------

• MICROBIAL CULTURE IMAGES



None



Bifidobacterium longum ATCC 15707

Incubation conditions : 36±1°C 48-72h under microaerophilic condition